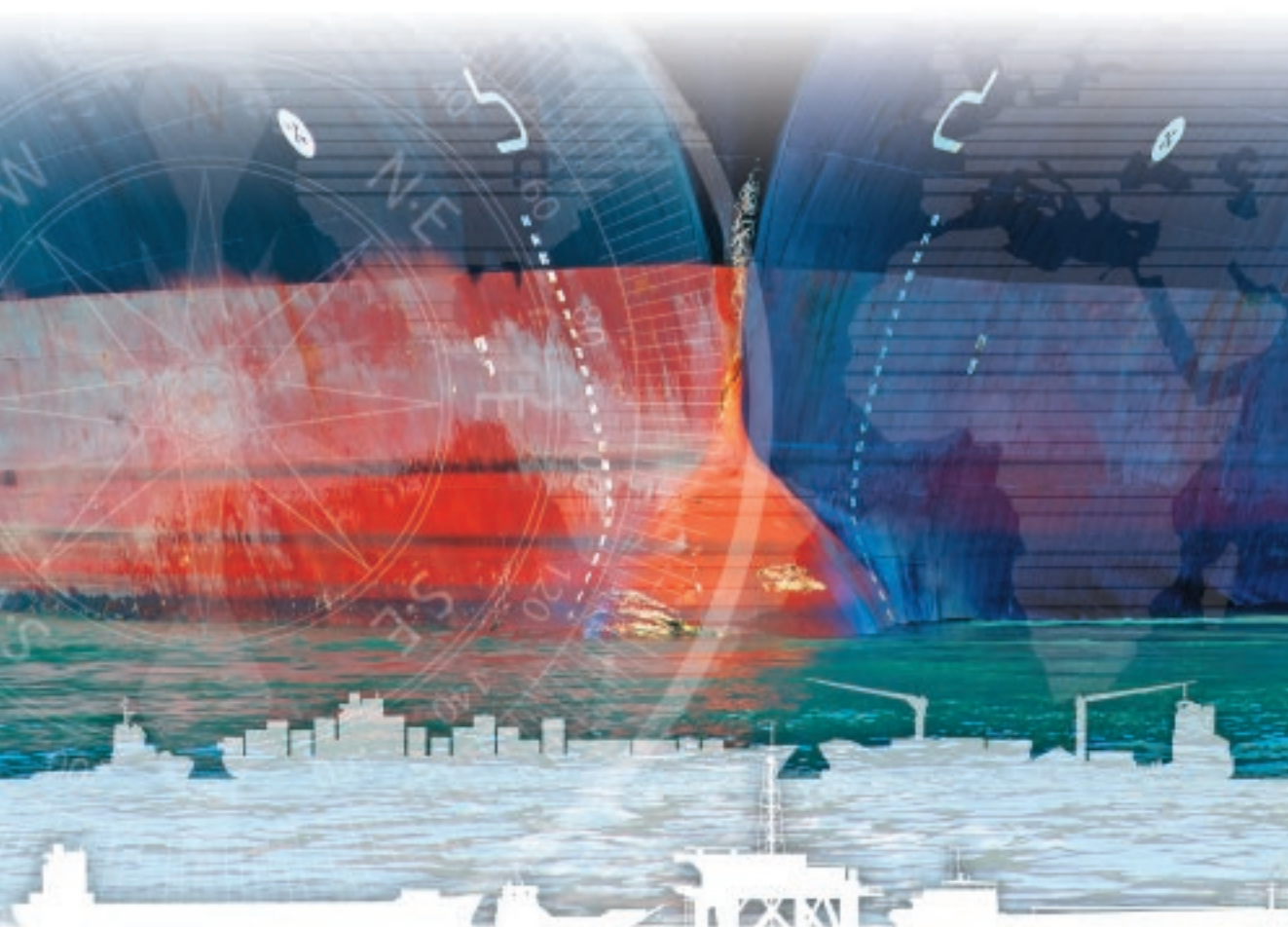




IBS | Marine Group





ClassIBS

ISTHMUS BUREAU OF SHIPPING

PROFILE

Isthmus Bureau of Shipping (**ClassIBS**) is an internationally recognized independent classification society, founded in Panama in 1995. It is a member of the International Association of Technical Survey and Classification Institution (TSCI). Our mission is to promote the security of life, property and the natural environment.

The principal work of the Society's expert technical staff is to verify that merchant ships and marine structures presented to it comply with Rules that the society has established for design, construction and periodic survey.



SHIP CLASSIFICATION

As a classification society our responsibility is to verify that vessels are maintained in accordance with applicable **ClassIBS Rules** for design, construction and/or periodic survey. **ClassIBS** is an essential link in the overall safety chain of the marine industry.

- NEW BUILDING
- PLAN APPROVAL
- VESSELS IN OPERATION
- TYPE APPROVAL



STATUTORY SERVICES

Statutory work is carried out in strict compliance with the IMO's **international conventions** and codes, as well as per the national regulations of the **Flag States, having authorized ClassIBS**. Major international conventions and codes directly relevant to the surveying and certification activities of **ClassIBS** include the following:

- SOLAS
- MARPOL
- Load Line
- Tonnage
- ISM
- ISPS
- Maritime Labour Convention
- Ballast Water Management Convention



On behalf of the following Flag States:



PORT STATE CONTROL

ClassIBS's dedication to Quality Shipping as well as its commitment towards continuous Port State Control (PSC) improvement, signifies a major non-stop objective for the society. Several components were adopted to include:

- Maintaining contacts with the corresponding MOUs
- Concrete actions to vessels having shown an increased detention ratio
- Improved monitoring process for each detention and especially to those attributed to **ClassIBS** by PSC.
- Thorough review of vessels previous PSC performance history (among others), prior deciding for vessel's entry with **ClassIBS**.
- PSC Concentrated Inspection Campaigns (CIC) as applied by several MOU Authorities is also monitored.

As a result of the above, significant improvement over **ClassIBS's** PSC statistics and performance has been witnessed for the past 3 years.

Visit our website
www.classibs.org | e-mail: ibs@classibs.org
 ☎ +507 211-2122



WORLDWIDE SERVICES NETWORK



America

- 1. Argentina
- 2. Brazil
- 3. Canada
- 4. Colombia
- 5. Cuba
- 6. Ecuador
- 7. Mexico
- 8. Panama
- 9. Paraguay
- 10. Peru
- 11. Uruguay
- 12. United States
- 13. Venezuela

Europe

- 14. Denmark
- 15. Finland
- 16. Germany
- 17. Greece
- 18. Italy
- 19. Latvia
- 20. Netherlands
- 21. Romania
- 22. Russia
- 23. Spain
- 24. Turkey
- 25. Ukraine
- 26. United Kingdom

Middle East

- 27. Egypt
- 28. Israel
- 29. United Arab Emirates

Asia

- 30. China
- 31. Hong Kong-Sar
- 32. India
- 33. Indonesia
- 34. Japan
- 35. Pakistan
- 36. Philippines
- 37. Singapore
- 38. South Korea
- 39. Taiwan
- 40. Thailand
- 41. Vietnam

Oceania

- 42. Australia

Africa

- 43. Ghana
- 44. Ivory Coast
- 45. Nigeria
- 46. Senegal
- 47. South Africa



PROFILE

A law firm member of the IBS Marine Group is integrated by a young and energetic group of professionals with over 15 years of experience.

The success of the firm is built upon the professional integrity of its members, the personalized relationship between our lawyers and clients, and by responding to the clients' needs promptly and effectively, while providing them with the highest standards of legal expertise.

MLS & Associates covers the full spectrum of maritime-related matters, most notably:

1. Ship Registry
2. Ship Registration of Mortgage/Discharge of Mortgage
3. Obtainment of Fishing License and International License of Transshipment Transport and Support
4. Maritime Litigation:
 - Ship Arrest in Panamanian waters and in transit through the Panama Canal
 - Cargo Claims
 - Maritime insurance
 - Collisions and salvage
 - Claims before the Panama Canal Authority
5. Counseling in ship sales and financial transactions, Bills of Lading, voyage and Time Charter party contracts, Towage contracts and Salvage contracts.
6. Filing of appeals against fines imposed by the Panama Maritime Authority to any Panamanian Flagged vessel.
7. Filing of application to obtain Non encumbrance and Good Standing Certificates
8. Filing of application to obtain Ship station radio license
9. Public Registry and Merchant Marine Searches.
10. Ship Registration under the following Flag Administrations:

PANAMA, LIBERIA, BELIZE, HONDURAS, BOLIVIA, JAMAICA, MOLDOVA,
VANUATU, TOGO.



INCORPORATION OF COMPANIES

MLS & Associates also offers its clients the incorporation of offshore companies in a diversity of jurisdictions, especially:

PANAMA, LIBERIA, THE BRITISH VIRGIN ISLANDS, BELIZE, MARSHALL ISLANDS, ST. KITTS & NEVIS, JAMAICA, VANUATU.

Our services include the drafting and registration of articles of incorporation, minutes of shareholders and/or directors meetings, issuance of share certificates, powers of attorney, and corporate annual tax payments and nominee directors.

OTHER SERVICES

- Bareboat charter registration (2 years)
- Special registration for delivery or demolition
- Search report of Vessels
- Filing application for discounts in the initial registration
- Continuous Synopsis Record (CSR)
- International Ship Security Certificate (ISSC)
- Minimum Safe Manning (MSMC)
- Tonnage Certificate (ITC)
- Bunker Certificates/CLC Certificates
- Exemption Certificate
- Authorizations
- Approval for Private Security Companies



ABOUT ITI

Isthmus Training Institute (ITI), member of the IBS Marine Group, was founded to fulfill the training requirements of the STCW convention and its amendments. It is a company at the service of the International Maritime Community.

ITI is an ISO 9001 certified company, is a Recognized Training Center authorized to conduct STCW courses under the following Flag State Administrations:



PANAMA



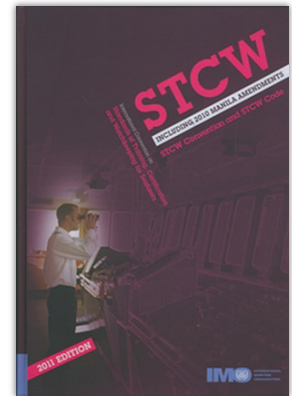
LIBERIA



BELIZE



HONDURAS



BRIDGE SIMULATOR

Our New Simulator Model NTPRO 5000 Navigational Simulator by TRANSAS

The Transas navigational simulator provides key elements, with new features to support specialized training applications. The NTPRO 5000 provides the platform to take us into a new era of maritime training.

- New level of radar picture processing
- Integration with real on-board navigation system
- New advanced effects in mathematical modeling
- Built-in communication and recording facilities
- Greatly improved instructor capabilities
- Highly realistic visualization system



ENGINE ROOM SIMULATOR TRANSAS

The Transas Engine Room simulator ERS 5000 is intended for education, training and assessment of competence of engine department personnel – engineer officer in charge of watch, second and chief engineer, ratings forming part of engineering watch:

- Familiarization
- Standard operation and watch keeping
- Advanced operation and troubleshooting
- Vessel resource management



LIST OF COURSES

1. Basic Training for oil and Chemical Tanker Operation.
2. Advanced Training for Oil Tankers Cargo Operations
3. Advanced Training for Chemical Tankers Cargo Operations
4. Basic Training for liquefied Gas Tanker Cargo Operation
5. Advanced Training for Liquefied Gas Tankers Cargo Operation
6. Radar Navigation RADAR Plotting and use of ARPA RADAR Navigation (Operational navigation)
7. RADAR, ARPA BRIDGE TEAMWORK AND SEARCH AND RESCUE (Automatic Radar Plotting Aids ARPA)
8. Dangerous Hazardous and Harmful Cargoes
9. Elementary First Aid
10. Medical First Aid
11. Medical Care
12. Proficiency in Personal Survival Techniques
13. Fire Prevention and Fire Fighting
14. Personal Safety and Social Responsibilities
15. Ship Simulator and Bridge Teamwork (Bridge Team Management)
16. Proficiency in Survival Craft and Rescue Boats (other than Fast Rescue Boat)
17. Proficiency in Fast Rescue Boat; Regulation
18. General Operator for Global Maritime Distress and Safety System,
19. Operational Use of Electronics Charts Display and Information System (ECDIS);
20. Crowd Management, Passenger Safety and Safety Training for Personnel Providing Direct Services to Passengers in Passenger Spaces;
21. Proficiency in Crisis Management and Human Behavior Training, including passenger safety, cargo safety and hull integrity training
22. Automatic identification System
23. Marine environmental awareness
24. Leadership and Teamwork,
25. Advanced Training in Fire Fighting; Regulation
26. Ship Security Officer
27. Company Security Officer
28. Security awareness training for seafarer with designated security duties
29. Security awareness training for all seafarers.
30. Train the Trainer
31. Train the Simulator Trainer and Assessor
32. Engine Room Resources Management
33. Bridge Resources Management
34. Upgrading Course for master and Chief Mate on Ships of 500 Gross Tonnage or more
35. Upgrading Course for Chief Engineer and Second Engineer (First Engineer)
36. Updating Course for Master and Chief Mates on Ships of 500 Gross Tonnage or more
37. Updating Course for Chief Engineer and Second Engineer (First Engineer)
38. Ships Cook (Management level of food and Catering)
39. Rating forming Part of a Navigational Watch;
40. Rating Forming Part of Engineering Watch
41. Yacht Master
42. Assessment, Examination and Certification for a Seafarers
43. Basic Safety Training Familiarization
44. Boarding Course
45. Cabotage Captain and Coastal Navigation
46. Restricted Operator for Global Maritime Distress and Safety System
47. Ordinary Seaman
48. Port Facility Security Officer
49. Port State Control
50. International safety Management code (ISM) Familiarization
51. Officer in Charge of a Navigational watch
52. Officer in Charge of an Engineering watch

Among others

Visit our website

www.iti.com.pa | e-mail: iti@iti.com.pa

+507 314-4308



The IBS Marine Group, aiming to improve customer service created **MR Services, Inc. (MRS)**, company engaged in providing Maritime Telecommunications Services to the vessels. Our business in focuses in two main activities:

1. Accounting Authority with assigned "ITU code –"PG17"
2. Point service activation "PSA 3175" authorized by INMARSAT to activate the INMARSAT terminals on board the vessels.



OTHER SERVICES

- Registration of INM C e-mail accounts (shore to ship)
- LRIT applications, the assistance we provide to our clients to attain the LRIT, consist in obtaining the activation of the LRIT equipment and follow-up to arrange with ATMS for the LRIT conformance test and to obtain the LRIT Certificate
- Pre-verification of application for Permanent Ship Station Licenses
- Sale of air time cards for the crewing
- Re-programming Radio equipment
- Sale & Installation of equipment

AUTHORIZATIONS BY FLAG REGISTRIES

We are authorized to act as Radio Accounting Authority in the following Registries:

RAA
PG17

Barbados

Liberia

Belize

Cambodia

Moldova

Vanuatu

Jamaica

Sierra Leone

Malta

Panama

Tanzania

Antigua & Barbuda

Kiribati

Jordan

Guatemala

Cook Islands

Authorizations received to act as Point Service Activation of INMARSAT terminals:

PSA
3175

Barbados

Honduras

Vanuatu

Sierra Leone

Antigua & Barbuda

Moldova

Jamaica

Malta

Panama

Guatemala

Jordan

Cook Islands

Tanzania



ISTHMUS MARINE DOCUMENTATION (IMD)

Is a solidly established marine documentation agency with headquarters in Panama City, founded in 1995.

IMD has been authorized by the Panama Maritime Authority to conduct the Annual Safety Inspection (ASI) and inspections for vessels older than 20 years.

OUR SERVICES

1. Publications

IMD delivers as per owners request the below list of publications duly stamped by the Panama Maritime Authority.

- Bridge Log Book
- Deck Log Book
- IMO Crew List
- Oil Record Books
- Diesel Motors
- Garbage Record
- Bell Book
- GMDSS Logbook
- Nautical Charts



2. Flag State Inspections



PANAMA



VANUATU





3. Seafarers Endorsements

PANAMA, BELIZE, MOLDOVA



4. Certificates of competence

PANAMA , HONDURAS





Williamson Place 0764, IBS Building
La Boca Balboa, Panama,
P.O. box 0832-1307, World Trade Center
Tel.: (507) 211-2122 Fax.: (507) 211-2273
E-mail: info@ibsmarinegroup.net | www.ibsmarinegroup.net