

ClassIBS

ISTHMUS BUREAU OF SHIPPING



PORT STATE CONTROL

PSC

2016

Contents

3	FOREWORD
4	MEASURES ADOPTED BY CLASSIBS
5	CLASSIBS OPERATING STATISTICS - DETENTIONS 2014-2016
6	IBS PSC CHARTS
21	PHOTOGRAPHS OF THE MOST COMMON DEFICIENCIES FOUND BY PSC DURING 2016
22	MOUS OFFICIAL ANNUAL REPORTS

ANNUAL PORT STATE CONTROL

FOREWORD

The objective of this report is to present the detentions on ships for which Isthmus Bureau of Shipping (ClassIBS) has carried out Class and/or Statutory work for different Ship owners and Administrations during the years 2014-2016. The report covers USCG, Paris MOU, Tokyo MOU, Black Seas MOU, Mediterranean Ocean MOU and Indian Ocean MOU (Memorandums of Understanding).

The report is based on information extracted from the MOU web sites and PSC's, detention reports obtained through the Flag States, detention reports obtained from our surveyors, and information of the ship status in our Data Base available previous to the detention.

Port State Control has been found to be very effective tool in reducing the number of ships with deficiencies as well as improving maritime safety and pollution prevention. There has been a significant increase in PSC activity worldwide in concern with a number of amendments to relevant international conventions.

Recognizing this and the related importance of PSC to the reputation and financial wellbeing of the ship owner and flag administration, ClassIBS has been working hard to reduce the detention rate of its Class ships.

Port State Control inspections procedures have been improved to cover not only a ships' hardware or documents, but also the operational requirements of the relevant conventions or shipboard maintenance under the ISM Code.

ClassIBS PSC performance position is considered within our target of objectives and demonstrates that ClassIBS ships are being operated and maintain to the highest standards. We are also proud of its performance over the past three years and the hard work invested by our Head Office Staff and field surveyors in ensuring that ships continue to operate in a high-quality environment.

ClassIBS Head Office
June 2016

Measures Adopted By ClassIBS

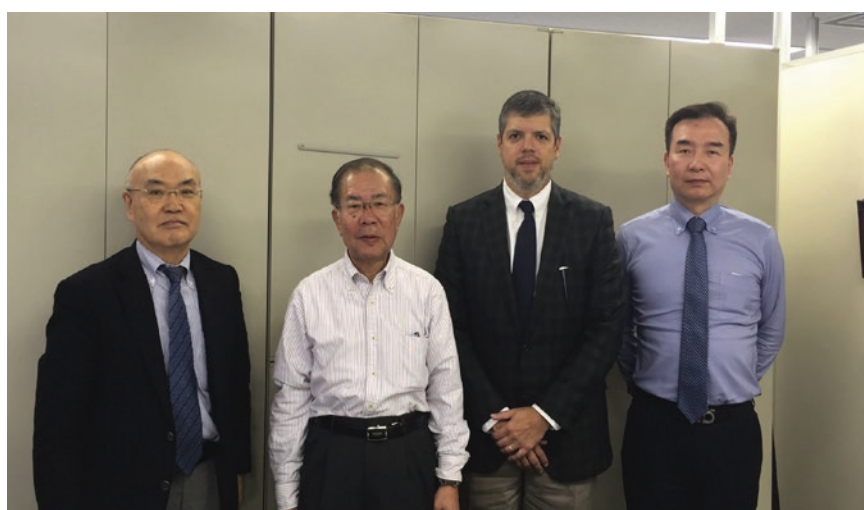
(1) **Cooperative assistance with Port States and treatment of deficiencies** When surveyors of the Society are notified of the detention of a ship classed with ClassIBS, the Society actively co-operates with the reporting PCS Authority.

(2) **Treatment of inspection reports by PSC officers** When a surveyor receives an inspection report from a port state authority, the report is sent to the ClassIBS Head Office. The report is immediately examined for the root causes of the deficiencies by experienced staff.

(3) **Special training at several meetings on PSC related issues** is conducted regularly for surveyors, to ensure that they carry out full and effective surveys with an uncompromising attitude towards ensuring the quality and safety of the ships of ClassIBS.

(4) **PSC related issues are regularly discussed at technical committee meetings**, in order to emphasis on the importance of proactively ensuring the proper procedures in place to prevent the detention of ships.

(5) **Visits to Port States Personnel** from the ClassIBS Head Office as well as local survey sites are assigned to visit the headquarters or offices of various Port States with the aim of introducing ClassIBS.



ClassIBS Mr. Koichi Tanaka
Tokyo Mou Secretary Mr. Mitsutoyo Okada
ClassIBS Mr. Alex Orillac
Tokyo Mou Technical Officer Mr. Ning Zheng

ClassIBS OPERATING STATISTICS - DETENTIONS 2014-2016

In 2016 out of total six hundred and fifty three (653) PSC inspections around the world, only eight (8) detentions were attributed to the work performed by our surveyors. These detentions took place on ports members of the Tokyo MOU and Paris MOU.

Therefore, on the year 2016, there were no attributable detentions to IBS by the USCG, Black Seas MOU, Mediterranean Ocean MOU and/or Indian Ocean MOU on any ship Class and/or certified by IBS.

The results of all regions combined arrive to a rate of 1.23% on the year 2016 and, together with the years 2014 and 2015, an accrued rate of 0.62% for the last three (3) years.

Attached, you will find the data that confirms our previous statements. We encourage you to verify its accuracy and feel free to communicate to whom you may consider appropriate.

1. Performance Worldwide
2. IBS Total Inspection 2016
3. Detentions by Flag State
4. Detentions by Ship Type
5. Detention by Ship Age
6. Detention by Gross Tonnage
7. Detention by Country
8. Inspection / Detention by MOU

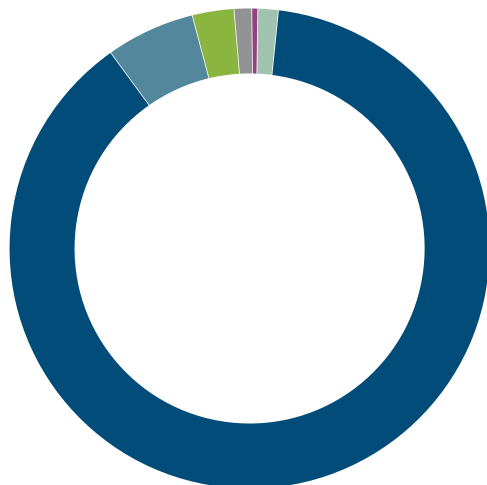
IBS PSC CHARTS

PSC Results per MOU 2014-2016

PSC RESULTS PER MOU 2014 - 2016										
	INITIAL INSPECTIONS				ATTRIBUTABLE DETENTIONS					
	2014	2015	2016	TOTAL INSP. PER MOU 2014-2016	2014	2015	2016	TOTAL ATT.PER MOU	% ATT PER MOU 2014-2016	
USCG	11	8	12	31	0	0	0	0	0.00	
TOKYO MOU	498	549	554	1,601	0	2	7	9	0.56	
PARIS MOU	63	44	42	149	2	0	1	3	2.01	
BLACK SEA MOU	31	30	32	93	0	0	0	0	0.00	
MEDITERRANEAN MOU	14	10	11	35	0	0	0	0	0.00	
INDIAN MOU	3	1	2	6	0	0	0	0	0.00	

TOTAL PSC RESULTS									
TOTAL INSPECTIONS PER YEAR					TOTAL ATTRIBUTABLE DETENTIONS PER YEAR				
2014	2015	2016	TOTAL INSPECTIONS 2014-2016		2014	2015	2016	TOTAL ATT. DETENTIONS 2014-2016	
620	642	653	1,915		2	2	8	12	
					% ATT. DET PER YEAR			TOTAL ATT. DETENTIONS 2014-2016 (%)	
					0.32	0.31	1.23	0.62	

IBS Total Inspections 2016 - All MOUs



- USCG 2%
- Tokyo MOU 85%
- Black Sea MOU 5%
- Mediterranean MOU 2%
- Paris MOU 6%
- Indian MOU 0%

Inspections / Detentions by Flag State 2014 - 2016

Flag State	Number of Inspections			Number of Detentions			Detentions Ratio (%)		
	2014	2015	2016	2014	2015	2016	2014	2015	2016
PANAMA	529	532	528	2	2	7	0.38	0.38	1.33
JAMAICA	14	29	33	0	0	0	0.00	0.00	0.00
BELIZE	73	70	73	0	0	1	0.00	0.00	1.37
HONDURAS	3	4	3	0	0	0	0.00	0.00	0.00
VANUATU	1	2	1	0	0	0	0.00	0.00	0.00
TANZANIA	0	1	3	0	0	0	0.00	0.00	0.00
SIERRA LEONE	0	1	1	0	0	0	0.00	0.00	0.00
KIRIBATI	0	3	3	0	0	0	0.00	0.00	0.00
TURKEY	0	0	1	0	0	0	0.00	0.00	0.00
CHINA	0	0	1	0	0	0	0.00	0.00	0.00
CAMBODIA	0	0	1	0	0	0	0.00	0.00	0.00
TOGO	0	0	3	0	0	0	0.00	0.00	0.00
AZERBAIJAN	0	0	1	0	0	0	0.00	0.00	0.00
UNITED KINGDOM	0	0	1	0	0	0	0.00	0.00	0.00
TOTAL	620	642	653	2	2	8	0.32	0.31	1.23

Inspections / Detentions by Ship Type 2014 - 2016

Gross Ton (x1,000)	Number of Inspections			Number of Detentions			Detentions Ratio (%)		
	2014	2015	2016	2014	2015	2016	2014	2015	2016
BULK CARRIER	187	153	159	1	0	2	0.53	0.00	1.26
GENERAL CARGO	191	262	280	0	2	4	0.00	0.76	1.43
CONTAINER CARGO	9	1	0	0	0	0	0.00	0.00	0.00
RO-RO SHIP	7	17	9	0	0	0	0.00	0.00	0.00
REEFER CARGO SHIP	14	7	8	0	0	0	0.00	0.00	0.00
OIL TANKER	5	8	16	0	0	0	0.00	0.00	0.00
CHEMICAL TANKER	16	16	22	1	0	0	6.25	0.00	0.00
OTHER CARGO SHIP	191	166	155	0	0	2	0.00	0.00	1.29
LPG TANKER	0	12	4	0	0	0	0.00	0.00	0.00
Total	620	642	653	2	2	8	0.32	0.31	1.23

Detentions by Ship's Age 2014 - 2016

Gross Ton (x1,000)	Number of Inspections			Number of Detentions			Detentions Ratio (%)		
	2014	2015	2016	2014	2015	2016	2014	2015	2016
0 - 10 years olds	204	211	209	0	1	3	0.00	0.47	1.44
Over 10 and up to 20	160	133	159	1	1	0	0.63	0.75	0.00
Over 20 and up to 30	139	192	186	0	0	4	0.00	0.00	2.15
Over 30	117	106	99	1	0	1	0.85	0.00	1.01
Total	620	642	653	2	2	8	0.32	0.31	1.23

Detentions by Gross Tonnage 2014 - 2016

Gross Ton (x1,000)	Number of Inspections			Number of Detentions			Detentions Ratio (%)		
	2014	2015	2016	2014	2015	2016	2014	2015	2016
Up to 5	289	303	322	1	0	5	0.36	0.00	1.55
Over 5 and up to 10	159	164	168	0	2	1	0.00	1.22	0.60
Over 10 and up to 20	99	103	89	0	0	1	0.00	0.00	1.12
Over 20 and up to 30	49	30	31	1	0	1	2.04	0.00	3.23
Over 30	34	42	43	0	0	0	0.00	0.00	0.00
Total	620	642	653	2	2	8	0.32	0.31	1.23

Inspections / Detentions by Country 2016

Country	Inspections 2016	Detentions 2016	Detention Ratio 2016	% of Inspections 2016
KOREA	50	0	0.00	8%
JAPAN	180	3	1.67	28%
MALAYSIA	15	0	0.00	2%
CHINA	99	3	3.03	15%
VIETNAM	75	0	0.00	11%
PHILIPPINES	44	0	0.00	7%
PERU	1	0	0.00	0%
INDONESIA	22	0	0.00	3%
AUSTRALIA	10	0	0.00	2%
MARSHALL ISLANDS	1	0	0.00	0%
THAILAND	13	0	0.00	2%
SINGAPORE	2	0	0.00	0%
PAPUA NEW GUINEA	4	0	0.00	1%
RUSSIA	51	0	0.00	8%
SPAIN	3	0	0.00	0%
GERMANY	1	0	0.00	0%
DENMARK	8	0	0.00	1%
GREECE	2	0	0.00	0%
IRAN	2	0	0.00	0%
ITALY	5	0	0.00	1%
UNITED KINGDOM	3	0	0.00	0%
USA	12	0	0.00	2%
NETHERLANDS	1	0	0.00	0%
NEW ZEALAND	1	1	100.00	0%
POLAND	2	0	0.00	0%
EGYPT	5	0	0.00	1%
UKRAINE	10	0	0.00	2%
LEBANON	3	0	0.00	0%

Part 2 Continue →

Inspections / Detentions by Country 2016

Country	Inspections 2016	Detentions 2016	Detention Ratio 2016	% of Inspections 2016
ROMANIA	15	1	6.67	2%
CHILE	1	0	0.00	0%
BULGARIA	4	0	0.00	1%
SLOVENIA	1	0	0.00	0%
TURKEY	3	0	0.00	0%
BELGIUM	1	0	0.00	0%
FRANCE	1	0	0.00	0%
GEORGIA	1	0	0.00	0%
MALTA	1	0	0.00	0%
TOTAL	653	8	1.23	100%

← Part 1

Inspections / Detentions Japan

Japan	Inspections 2016	Detentions 2016	Detention Ratio 2016	% of Inspections 2016
AKITAFUNAGAWA	3	0	0.00	2%
CHIBA	14	0	0.00	8%
FUSHIKI	5	0	0.00	3%
HIMEJI	6	0	0.00	3%
HACHINOHE	4	0	0.00	2%
HITACHINAKA	2	0	0.00	1%
ISHINOMAKI	4	0	0.00	2%
IMABARI	10	0	0.00	6%
KAWASAKI	12	0	0.00	7%
KASHIMA	4	0	0.00	2%
KAGOSHIMA	2	0	0.00	1%
KATSUURA	1	0	0.00	1%
KOBE	4	0	0.00	2%
KURE	1	0	0.00	1%
MOJI	3	0	0.00	2%
MISUMI	2	0	0.00	1%
MIZUSHIMA	5	0	0.00	3%
MURORAN	4	0	0.00	2%
NIIGATA	9	0	0.00	5%
NANAO	1	0	0.00	1%
NAHA	1	0	0.00	1%
NAGASAKI	4	0	0.00	2%
NAGOYA	4	0	0.00	2%
OITA	1	0	0.00	1%
OTARU	3	0	0.00	2%
OSAKA	12	2	16.67	7%
ONAHAMA	1	0	0.00	1%
ONOMICHI	5	0	0.00	3%
SENDAISHIOGAMA	4	0	0.00	2%

Part 2 Continue →

Inspections / Detentions Japan

Japan	Inspections 2016	Detentions 2016	Detention Ratio 2016	% of Inspections 2016
SHIMIZU	1	0	0.00	1%
SAKAI	1	0	0.00	1%
SHIMONOSEKI	2	0	0.00	1%
TAMAN	1	0	0.00	1%
TAKAMATSU	6	0	0.00	3%
TOKUYAMA	5	0	0.00	3%
TOMAKOMAI	12	0	0.00	7%
TOKYO	11	0	0.00	6%
YOKOHAMA	7	1	14.29	4%
WAKAYAMA	2	0	0.00	1%
WAKAMATSU	1	0	0.00	1%
TOTAL	180	3	1.67	100%

← Part 1

Inspections / Detentions China

China	Inspections 2016	Detentions 2016	Detention Ratio 2016	% of Inspections 2016
HAIKOU	1	0	0.00	1%
CAOFEIDIAN	1	0	0.00	1%
CHANGSHU	2	0	0.00	2%
DALIAN	4	0	0.00	4%
DANDONG	3	0	0.00	3%
HONG KONG	1	0	0.00	1%
HUMEN	3	0	0.00	3%
GUANGZHOU	4	0	0.00	4%
JIANGYIN	2	0	0.00	2%
JIAXING	1	0	0.00	1%
JINZHOU	2	0	0.00	2%
NANJING	1	0	0.00	1%
NINGDE	2	0	0.00	2%
NINGBO	1	0	0.00	1%
LIANYUNGANG	5	0	0.00	5%
RIZHAO	5	0	0.00	5%
QINGDAO	1	0	0.00	1%
QINHUANGDAO	3	0	0.00	3%
QUANZHOU	1	0	0.00	1%
TANGSHAN	3	0	0.00	3%
TAICANG	1	0	0.00	1%
TAIZHOU	6	0	0.00	6%
TIANJIN	5	0	0.00	5%
SHENZHEN	1	0	0.00	1%
SHANGHAI	1	0	0.00	1%
YINGKOU	9	0	0.00	9%
YANTAI	4	0	0.00	4%

Part 2 Continue

Inspections / Detentions China

China	Inspections 2016	Detentions 2016	Detention Ratio 2016	% of Inspections 2016
YANTAI	4	0	0.00	4%
ZHOUSHAN	16	1	6.25	16%
ZHANGJIAGANG	3	0	0.00	3%
ZHENJIANG	1	0	0.00	1%
ZHANJIANG	1	0	0.00	1%
XIAMEN	3	2	66.67	3%
WEIHAI	2	0	0.00	2%
TOTAL	99	3	3.03	100%

← Part 1

Inspections / Detentions Vietnam

Vietnam	Inspections 2016	Detentions 2016	Detention Ratio 2016	% of Inspections 2016
CHAN MAY	1	0	0.00	1%
DONGHAI	1	0	0.00	1%
DONGNAI	7	0	0.00	9%
DANANG	7	0	0.00	9%
HAIPHONG	19	0	0.00	25%
HO CHI MINH CITY	5	0	0.00	7%
NGHE AN	1	0	0.00	1%
NHATRANG	1	0	0.00	1%
QUANGNINH	5	0	0.00	7%
QUYNHON	6	0	0.00	8%
VUNG ANG	1	0	0.00	1%
VUNGTAU	21	0	0.00	28%
TOTAL	75	0	0.00	100%

Inspections / Detentions Russia

Russia	Inspections 2016	Detentions 2016	Detention Ratio 2016	% of Inspections 2016
EYSK	1	0	0.00	2%
NAKHODKA	11	0	0.00	22%
KHOLMSK	1	0	0.00	2%
KORSAKOV	2	0	0.00	4%
NOVOROSSIISK	10	0	0.00	20%
POSJET	1	0	0.00	2%
ROSTOV	1	0	0.00	2%
SEVASTOPOL	2	0	0.00	4%
TEMRYUK	1	0	0.00	2%
VLADIVOSTOK	14	0	0.00	27%
VOSTOCHNY	4	0	0.00	8%
VANINO	3	0	0.00	6%
TOTAL	51	0	0.00	100%

Inspections / Detentions Korea

Korea	Inspections 2016	Detentions 2016	Detention Ratio 2016	% of Inspections 2016
DAESAN	1	0	0.00	2%
POHANG	14	0	0.00	28%
PYEONGTAEK	2	0	0.00	4%
MASAN	2	0	0.00	4%
GUNSAN	2	0	0.00	4%
BUSAN	5	0	0.00	10%
MOKPO	5	0	0.00	10%
ULSAN	4	0	0.00	8%
INCHEON	8	0	0.00	16%
GWANGYANG	3	0	0.00	6%
DONGHAE	4	0	0.00	8%
TOTAL	50	0	0.00	100%

Inspections / Detentions Philippines

Philippines	Inspections 2016	Detentions 2016	Detention Ratio 2016	% of Inspections 2016
BACOLOD	5	0	0.00	11%
BATANGAS	6	0	0.00	14%
BATAAN	1	0	0.00	2%
BATAANINES	1	0	0.00	2%
CAGAYAN DE ORO	4	0	0.00	9%
DAVAO	5	0	0.00	11%
ISABEL	1	0	0.00	2%
ILOILO	2	0	0.00	5%
MANILA	9	0	0.00	20%
LEGASPI	2	0	0.00	5%
SUBIC BAY	4	0	0.00	9%
SAN FERNANDO	2	0	0.00	5%
ZAMBOANGA	1	0	0.00	2%
ILIGAN	1	0	0.00	2%
TOTAL	44	0	0.00	100%

Inspections / Detentions Indonesia

Indonesia	Inspections 2016	Detentions 2016	Detention Ratio 2016	% of Inspections 2016
BINTUNG	1	2016	0.00	5%
SEBUKU ISLAND	1	0	0.00	5%
PANJANG	2	0	0.00	9%
TANJUNG PRIOK	6	0	0.00	27%
TANJUNG EMAS	1	0	0.00	5%
BANTEN	1	0	0.00	5%
BELAWAN	1	0	0.00	5%
GRESIK	3	0	0.00	14%
TELUK	3	0	0.00	14%
DUMAI	1	0	0.00	5%
BANJARMASIN	2	0	0.00	9%
TOTAL	22	0	0.00	100%

Inspections / Detentions Malaysia

Malaysia	Inspections 2016	Detentions 2016	Detention Ratio 2016	% of Inspections 2016
SANDAKAN	3	0	0.00	20%
KOTA	1	0	0.00	7%
PENANG	1	0	0.00	7%
BINTULU	2	0	0.00	13%
PORT KELANG	2	0	0.00	13%
KEMAMAN	1	0	0.00	7%
TAWAU	2	0	0.00	13%
KUCHING	3	0	0.00	20%
TOTAL	15	0	0.00	100%

Inspections / Detentions Romania

Romania	Inspections 2016	Detentions 2016	Detention Ratio 2016	% of Inspections 2016
Braila	2	0	0.00	13%
Constanta	13	1	7.69	87%
TOTAL	15	1	6.67	100%

Inspections / Detentions Thailand

Thailand	Inspections 2016	Detentions 2016	Detention Ratio 2016	% of Inspections 2016
Sri Racha	1	0	0.00	8%
Bangkok	12	0	0.00	92%
TOTAL	13	0	0.00	100%

Inspections / Detentions USA

USA	Inspections 2016	Detentions 2016	Detention Ratio 2016	% of Inspections 2016
USA	12	0	0.00	100%
TOTAL	12	0	0.00	100%

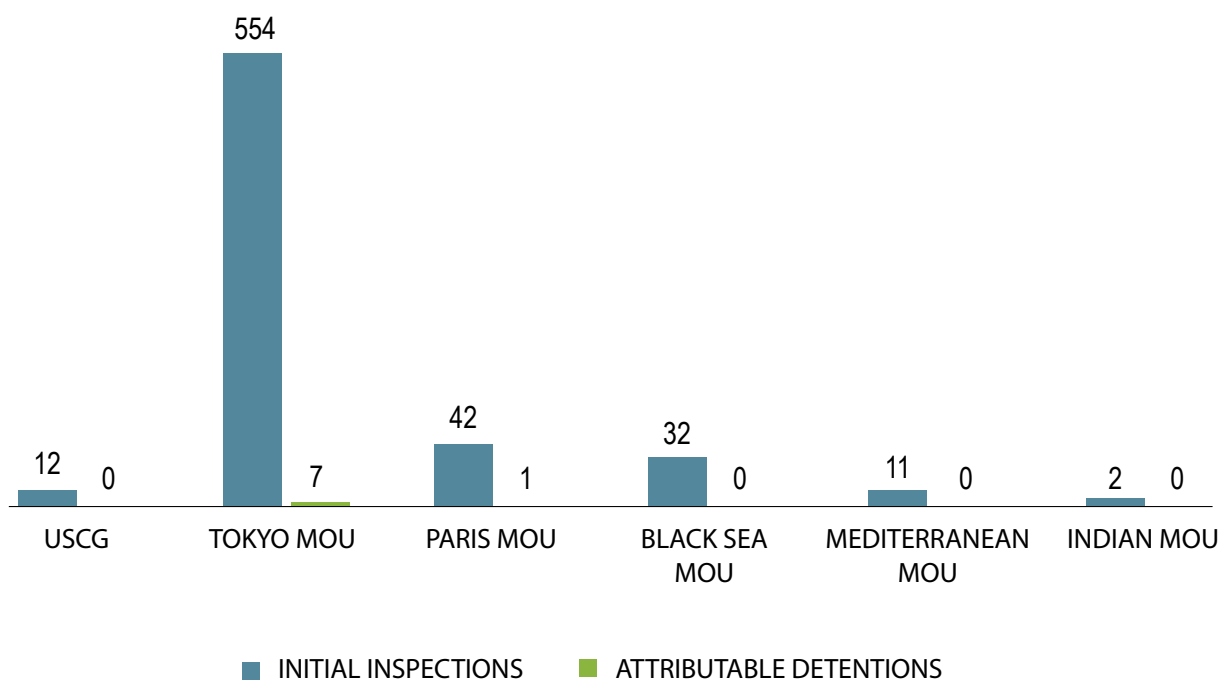
Inspections / Detentions Australia

Australia	Inspections 2016	Detentions 2016	Detention Ratio 2016	% of Inspections 2016
ALBANY	1	0	0.00	10%
BUNBURY	1	0	0.00	10%
GOVE HARBOUR	1	0	0.00	10%
GLADSTONE	2	0	0.00	20%
NEWCASTLE	5	0	0.00	50%
TOTAL	10	0	0.00	100%

Inspections / Detentions Ukraine

Ukraine	Inspections 2016	Detentions 2016	Detention Ratio 2016	% of Inspections 2016
RENI	1	0	0.00	10%
KHERSON	2	0	0.00	20%
ODESSA	5	0	0.00	50%
NIKOLAYEV	2	0	0.00	20%
TOTAL	10	0	0.00	100%

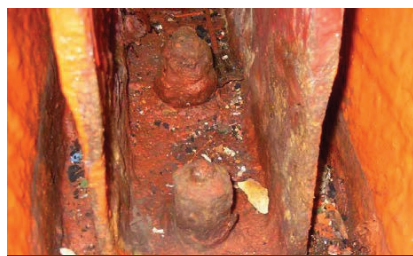
IBS Inspections -vs- Attributable Detentions 2016



PHOTOGRAPHS OF DEFICIENCIES DURING PORT STATE CONTROL



Inadequate re-setting of on-load release gear



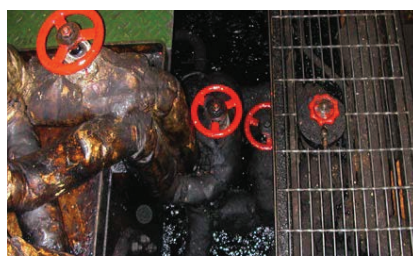
Wasted support bracket



Leaked fire line



Cracked bulwark stay



Oily and dirty E/R floor



Patched sea water pipe



Corroded packing



Missing butterfly nut



Wasted hatch way

MOUs OFFICIAL ANNUAL REPORTS

Paris MOU-Performance 2014 - 2016

Recognized Organization (RO)	Inspections 2014-2016	Detentions 2014-2016	Low/medium limit	Medium / high limit	Excess Factor	Performance level	
American Bureau of Shipping	ABS	5703	1	132	96,17	-1,97	HIGH
Lloyd's Register	LR	12500	4	276	223,75	-1,96	
DNV GL AS	DNVGL	11600	10	257	206,70	-1,89	
Bureau Veritas	BV	11453	23	254	203,91	-1,76	
Korean Register of Shipping	KRS	1091	1	30	13,71	-1,73	
Registro Italiano Navale	RINA	3743	9	89	60,27	-1,65	
China Classification Society	CCS	818	1	23	9,27	-1,57	
Nippon Kaiji Kyokai	NKK	7965	28	180	138,25	-1,56	
Turkish Lloyd	TL	591	1	18	5,72	-1,22	
Russian Maritime Register of Shipping	RMRS	3368	24	81	53,49	-0,99	
Polski Rejestr Statkow (Polish Register of Shipping)	PRS	454	4	14	3,67	0,03	MEDIUM
Croatian Register of Shipping	CRS	147	0	6	0,00	0,05	
International Naval Surveys Bureau	INSB	589	7	18	5,69	0,11	
Indian Register of Shipping	IRS	79	0	4	0,00	0,19	
Phoenix Register of Shipping	PHRS	241	3	9	0,74	0,28	
Other	OTHER	337	5	11	2,01	0,32	
Macosnar Corporation	MC	80	1	4	0,00	0,38	
Maritime Lloyd - Georgia	ML	133	2	6	0,00	0,40	
Register of Shipping (Albania)	RSA	67	1	4	0,00	0,43	
Panama Maritime Documentation Services	PMDS	117	2	5	0,00	0,44	
Universal Shipping Bureau Inc.	USB	63	1	4	0,00	0,44	
Dromon Bureau of Shipping	DBS	479	9	15	4,04	0,45	
Isthmus Bureau of Shipping, S.A.	IBS	149	3	6	0,00	0,50	
Panama Register Corporation	PRC	94	2	5	0,00	0,52	
Overseas Marine Certification Services	OMCS	79	2	4	0,00	0,58	
Intermaritime Certification Services, ICS Class	ICS	118	3	5	0,00	0,61	
Maritime Bureau of Shipping	MBS	109	3	5	0,00	0,64	
Bulgarian Register of Shipping	BRS	266	9	10	1,06	0,93	
Columbus American Register	COLAMREG	77	4	4	0,00	0,99	
Venezuelan Register of Shipping	VRS	187	8	7	0,09	1,24	LOW
National Shipping Adjuster Inc.	NASHA	129	7	6	0,00	1,70	
Shipping Register of Ukraine	SRU	559	22	17	5,23	1,72	
International Register of Shipping	IS	323	15	11	1,82	1,94	

TOKYO MOU PERFORMANCE 2014 - 2016

Recognized Organization (RO)	No. of overall inspections 2014-2016	No. of RO responsible detentions 2014-2016	Low/medium Limit	Medium/high Limit	Excess factor	Performance level
Polski Rejestr Statkow	79	1	4	0	0.39	MEDIUM
SingClass International Pte Ltd	249	4	9	1	0.38	
Sing-Lloyd	422	7	14	3	0.36	
Dromon Bureau of Shipping	90	1	4	0	0.35	
Ship Classification Malaysia	91	1	5	0	0.35	
Croatian Register of Shipping	105	1	5	0	0.31	
Panama Shipping Registrar Inc.	242	3	9	1	0.27	
Cosmos Marine Bureau	129	1	6	0	0.25	
Universal Maritime Bureau	956	13	27	11	0.10	
International Ship Classification	831	9	24	9	-0.08	
International Register of Shipping	571	5	17	5	-0.10	
Union Bureau of Shipping	2,446	35	61	37	-0.10	
Global Marine Bureau	576	5	18	5	-0.12	
Korea Classification Society (former Josen Classification Society)	802	7	23	9	-0.33	
Biro Klasifikasi Indonesia	326	1	11	2	-0.42	
Panama Register Corporation	227	0	9	1	-0.45	
Indian Register of Shipping	227	0	10	1	-0.73	
Panama Maritime Documentation Services	1,226	8	33	16	-0.80	
Overseas Marine Certification Services	1,386	8	37	19	-0.94	
Isthmus Bureau of Shipping	1,601	9	42	22	-1.00	
CR Classification Society	850	3	24	10	-1.06	
Intermaritime Certification Services, S.A.	1,673	7	43	24	-1.25	
Russian Maritime Register of Shipping	1,266	2	34	17	-1.63	
Vietnam Register	2,287	5	57	34	-1.63	
Bureau Veritas	10,544	21	235	187	-1.76	
Nippon Kaiji Kyokai	31,230	39	666	583	-1.86	
American Bureau of Shipping	10,396	10	232	184	-1.88	
DNV GL AS	26,399	19	566	490	-1.92	
Lloyd's Register	13,605	7	299	245	-1.94	
Korean Register of Shipping	9,333	3	209	164	-1.95	

TOKYO MOU 2016

Recognized Organization (RO)	No. of overall inspections	No. of overall detentions	No. of RO responsible detentions	Detention percentage%	RO responsible detention percentage%	Percentage of RO responsible detentions%
American Bureau of Shipping	3,669	83	1	2.26	0.03	1.20
American Register of Shipping	31	1	0	3.23	0	0
Arados Bureau for Sea Services	1	0	0	0	0	0
Asia Classification Society	8	1	0	12.50	0	0
Biro Klasifikasi Indonesia	112	15	0	13.39	0	0
Bulgarski Koraben Registar	2	0	0	0	0	0
Bureau Veritas	3,614	103	10	2.85	0.28	9.71
C.T.M. Inspection and Classification Company, S. de R.L.	2	1	1	50.00	50.00	100.00
Caspian Register of Shipping	1	0	0	0	0	0
China Classification Society	2,587	25	0	0.97	0	0
Columbus American Register	1	1	0	100.0	0	0
Cosmos Marine Bureau	93	9	1	9.68	1.08	11.11
CR Classification Society	257	10	2	3.89	0.78	20.00
Croatian Register of Shipping	39	4	1	10.26	2.56	25.00
Cyprus Bureau of Shipping	4	0	0	0	0	0
DNV GL AS	9,747	255	3	2.62	0.03	1.18
Dromon Bureau of Shipping	73	8	1	10.96	1.37	12.50
Global Marine Bureau	85	10	0	11.76	0	0
Global Shipping Bureau	4	1	0	25.00	0	0
Horizon International of Naval Surveying and Inspection Bureau, S.A.	1	0	0	0	0	0
Icons Marine Services PTE Ltd	2	0	0	0	0	0
Indian Register of Shipping	86	2	0	2.33	0	0
Intermaritime Certification Services, S.A.	651	42	2	6.45	0.31	4.76
International Marine Survey Association	2	0	0	0	0	0
International Maritime Register	1	1	0	100.0	0	0
International Naval Surveys Bureau	30	2	0	6.67	0	0
International Register of Shipping	135	8	0	5.93	0	0
International Ship Classification	231	12	2	5.19	0.87	16.67
Iranian Classification Society	41	2	0	4.88	0.00	0.00
Isthmus Bureau of Shipping	554	34	7	6.14	1.26	20.59
Isthmus Maritime Classification Society S.A.	5	0	0	0	0	0
Korea Classification Society (former Joson Classification Society)	313	25	1	7.99	0.32	4.00
Korea Ship Safety Technology Authority	28	1	0	3.57	0	0
Korean Register of Shipping	3,170	57	0	1.80	0	0

USCG PERFORMANCE 2014 - 2016

Recognized Organization (RO)	Abbreviation	Vessel Examinations				RO-Related Detentions				Ratio
		2014	2015	2016	Total	2014	2015	2016	Total	
American Bureau of Shipping	ABS	1,603	1,677	1,836	5,116	-	-	-	0	0.00%
Bulgarian Register of Shipping	BKR	-	3	6	9	-	-	-	0	0.00%
Bureau Veritas	BV	1,310	1,038	1,113	3,461	1	2	-	3	0.08%
China Classification Society	CCS	280	234	231	745	-	-	-	0	0.00%
CR Classification Society	CR	6	2	1	9	-	-	-	0	0.00%
Croatian Register of Shipping	CRS	37	17	17	71	-	-	-	0	0.00%
Det Norske Veritas/Germanischer Lloyd	DNV GL	3,622	2,687	2,122	8,431	2	1	-	3	0.04%
Dromon Bureau of Shipping	DBS	-	-	-	-	-	-	-	0	0.00%
Hellenic Register of Shipping	HRS	2	-	-	2	-	-	-	0	0.00%
Horizon International Naval Survey and Inspection Bureau	HNS	4	1	2	7	-	-	-	0	0.00%
Indian Register of Shipping	IRS	12	13	13	38	-	-	-	0	0.00%
International Naval Surveys Bureau	INSB	8	8	6	22	-	-	-	0	0.00%
Isthmus Bureau of Shipping	IBS	11	8	12	31	-	-	-	0	0.00%
Korean Register of Shipping	KRS	293	287	242	822	-	-	-	0	0.00%
Lloyd's Register	LR	2,310	2,143	2,403	6,856	-	-	-	0	0.00%
Nippon Kaiji Kyokai	NKK	2,590	2,203	2,296	7,089	-	-	-	0	0.01%
Panama Bureau of Shipping	PBS	4	3	4	11	-	-	-	0	0.00%
Panama Maritime Surveyors Bureau	PMS	5	-	3	8	-	-	-	0	0.00%
Polski Rejestr Statkow	PRS	14	22	17	53	-	-	-	0	0.00%
Registro Italiano Navale	RINA	387	355	284	1,026	1	-	-	1	0.10%
Rinava Portuguesa	RP	12	7	14	33	-	-	-	0	0.00%
Russian Maritime Register of Shipping	RS	47	43	34	124	-	-	-	0	0.00%
Universal Shipping Bureau	USB	10	2	1	13	-	-	-	0	0.00%
VG Register of Shipping	VGRS	6	2	1	9	-	-	-	0	0.00%
Panama Maritime Documentation Service	PMDS	95	15	31	141	1	-	3	4	2.83%
National Shipping Adjusters Inc	NASHA	20	9	11	40	-	-	1	1	2.50%
Compania Nacional de Registro y Inspecciones de Naves	CNRIN	12	-	12	24	1	3	2	6	25.00%
Intermaritime Certification Services	IMC	47	10	12	69	1	3	-	4	5.79%
International Register of Shipping	IROS	9	4	4	17	-	1	-	1	5.88%
Macosnar Corporation	MC	1	-	1	2	1	-	1	2	100.00%
Panama Registrar Corporation	PRC	3	2	3	8	-	-	1	1	12.50%
Panama Shipping Registrar	PSR	5	-	1	6	1	-	-	1	16.66%

A detention ratio less than 0.5%	0 points
A detention ratio equal to 0.5% or less than 1%	3 points
A detention ratio equal to 1% or less than 2%	5 points
A detention ratio equal to or greater than 2%	Priority 1

BLACK SEAS MOU 2016

Recognized organization (RO)	NUMBER OF INSPECTIONS	NUMBER OF INSPECTIONS WITH DEFICIENCIES	NUMBER OF DEFICIENCIES	NUMBER OF RO RELATED DEFICIENCIES	NUMBER OF DETENTIONS	DETENTIONS WITH RO RELATED DETAINABLE DEFICIENCIES
American Bureau of Shipping	553	218	1006	0	7	0
American Register of Shipping	12	8	46	0	1	0
Bulgarian Register of Shipping	78	64	557	2	10	2
Bureau Veritas	833	429	2293	1	23	1
China Classification Society	106	24	114	0	0	0
Columbus American Register	14	14	129	0	2	0
Croatian Register of Shipping	10	2	15	0	1	0
DNV GL AS	1102	460	2233	0	11	0
Dromon Bureau of Shipping	172	148	1129	3	18	1
Global Marine Bureau Inc.	11	9	67	0	1	0
Intermaritime Certification Services, ICS Class	30	25	168	0	1	0
International Naval Surveys Bureau	124	105	792	0	8	0
International Register of Shipping	84	65	570	0	7	0
Isthmus Bureau of Shipping, S.A.	32	24	200	7	4	1
Korean Register of Shipping	75	35	182	0	0	0
Lloyd's Register	864	386	1972	0	8	0
Macosnar Corporation	38	35	235	0	4	0
Maritime Bureau of Shipping	17	16	156	0	2	0
Maritime Lloyd Ltd, Georgia	58	54	540	7	8	1
Mediterranean Shipping Register (MSR)	15	12	79	0	1	0
National Shipping Adjuster Inc.	49	35	253	0	4	0
Nippon Kaiji Kyokai	1120	589	3597	5	50	3
Other	93	81	833	4	10	2
Overseas Marine Certification Services	16	11	107	0	2	0
Panama Maritime Documentation Services	13	10	88	0	3	0
Panama Register Corporation	18	13	93	0	0	0
Panama Shipping Registrar Inc.	13	12	92	0	3	0
Phoenix Register of Shipping	86	66	518	0	7	0
Polski Rejestr Statkow (Polish Register of Shipping)	42	31	213	0	1	0
RINA Services S.p.A.	245	120	632	0	3	0
Russian Maritime Register of Shipping	586	355	1979	4	20	2
Shipping Register of Ukraine (SRU)	163	121	958	3	19	2
Turkish Lloyd	205	149	969	0	21	0
Venezuelan Register of Shipping	59	56	644	3	12	1



PSC 2016
PORT STATE CONTROL



www.ClassIBS.org